

Laf Classic Valve Block Removal

Time Needed: 45min

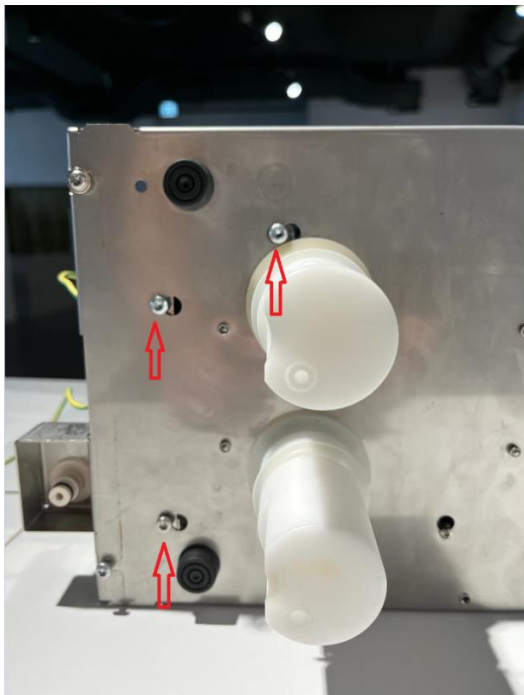
Parts Needed: 8615501030 Assy Milk Manifold 2.0



Tools Needed: Screwdriver 20 Torx, Pliers

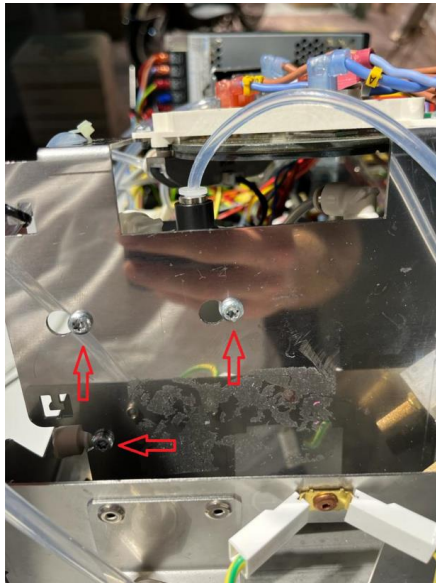
Step1

- Remove the 3 20 Torx screws located below to loosen the block from the guide.



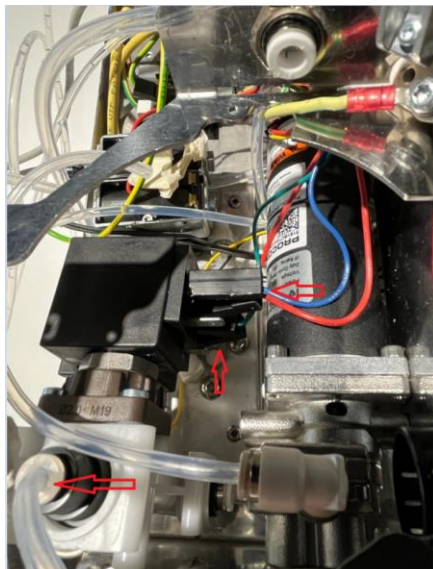
Step2

- Remove the 3 20 Torx screws that hold the valve block in place.
- have the block module a little high to get to the lower screw.



Step3

- Disconnect the cables of the two valve blocks.
- it is best to mark which cable goes to which valve so that you do not mix them up at the end.
- Remove the hose that goes to the air valve.



Step4

- remove the hose that is between the valve block and the milk pump.
- after that you can take the valve block

