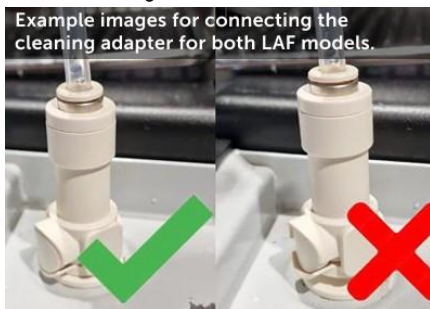
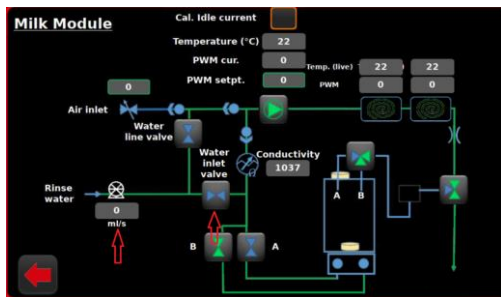


## Error 1011 Water is not available

1. Replug cleaning adapter and make sure it is pushed all the way in.

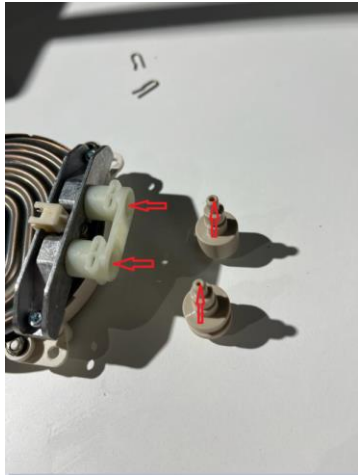


2. Inspect water flowrate in Direct Control by activating Water inlet valve. It should be in the range of 4-7.
  - Check if water is coming to the LAF.
  - Check if water valve is opening.



3. Heater could be blocked.

- the restrictor could be blocked.
- on the heater the inlet or outlet could be clogged with particles.



4. Valve block is blocked.

- particles may be trapped in the valve, and it may not open or close properly.
- particles could be stuck in the valve.
- there could be particles on the block itself.

