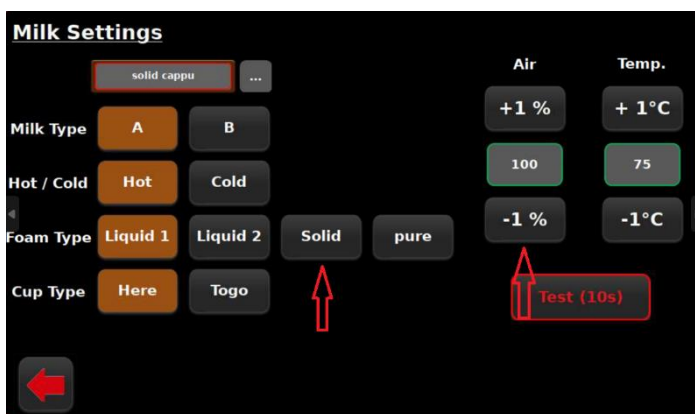


Error 1007 milk is empty

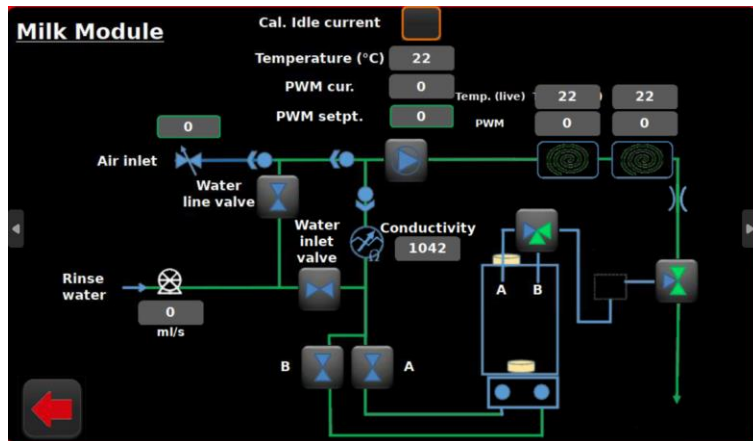
1. Air Setting to high = reduce Air on Milk Airflow page
 - reduce e.g., solid by 5% and try again.
 - should it persist reduce it again.
 - otherwise, the cause is somewhere else.



2. Restrictor in the Heating element outlet is blocked.
 - there could be particles in the restrictor so that no milk or barely gets through.
 - check outlet and inlet for particles.



3. Pump calibration was done with milk container plugged in
- go into direct control and calibrate again.
 - be sure that the container is plugged out.
 - press calibrate it is best to run the process 2 times.



4. other possibilities

- Milk is spoiled.
- Refill Milk
- Flow of is obstructed somewhere (for example milk valve not opening)