

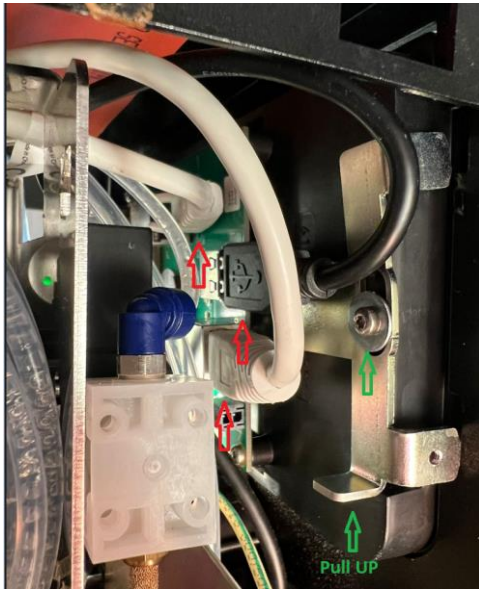
# Instructions Update LAF

Step1: The side walls of the LAF are loosened on each side with 4 screws.

As soon as this is done, it is best to start with the display.

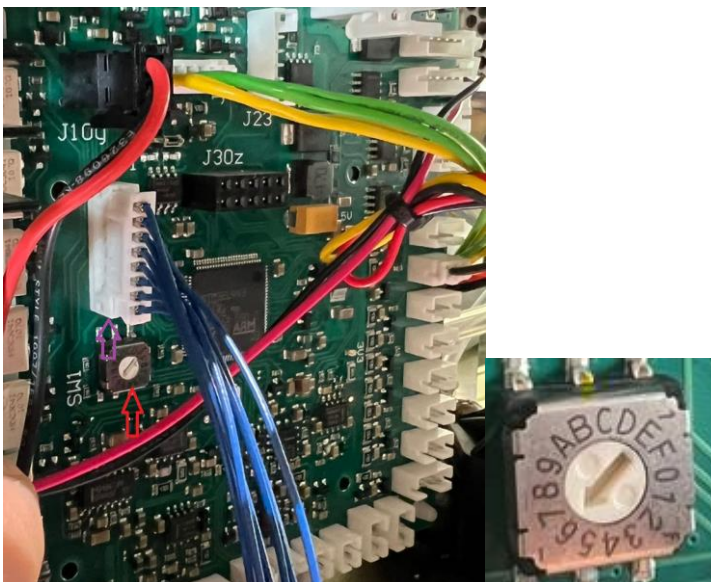
Loosen the screw only a little (left and right). Then the display should come off with a slight lifting of the metal plate. (Green marked)

The red marked ones are simply loosened and it is **very important not to mix up the 2 Lan cables, otherwise the display will not turn on.**



Step2: Make sure the machine is off.

Make sure the Board Selector is set to **6** and the **Pro variant to 7** (marked red). now the **STM-CABLE** can be plugged into the board. (Marked purple)



The machine can then be switched on.

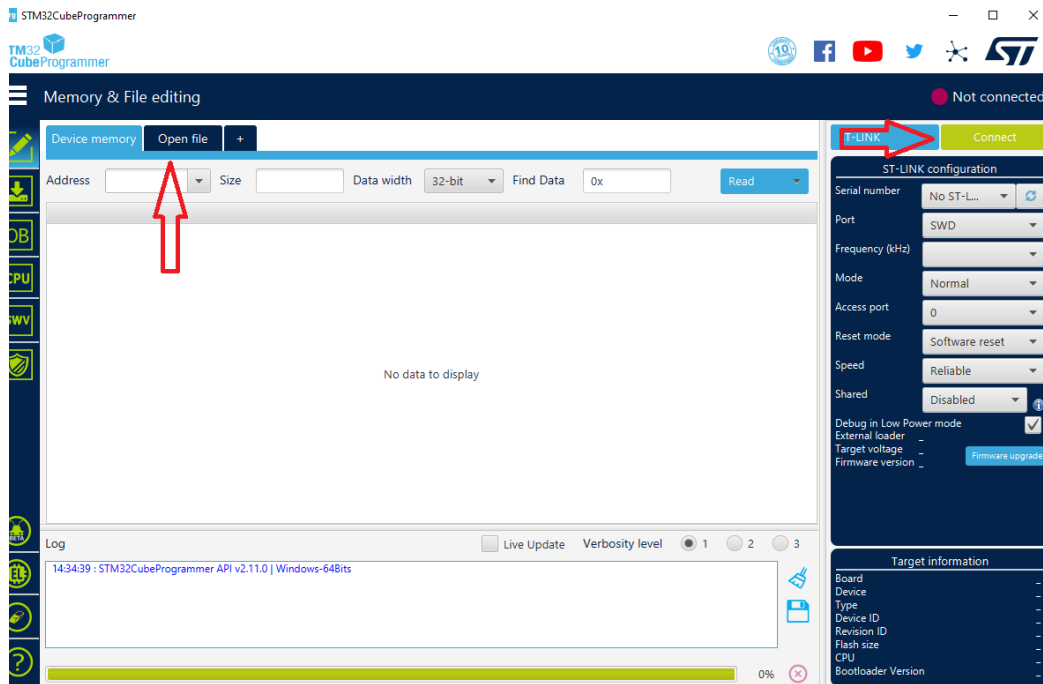
Also open the STM32CubeProgrammer now the PCB board can be updated.

**Step 1** (press **Open file**).

**Step 2** (open the file bootloader).

**Step 3** now instead of open file (bootloader).

**Step 4** press **Connected**.



**Step 5** press **Download**, the download should be finished after a few seconds.

a message should appear with (File download complete).

**Step 6** Press **disconnect** then you can **switch off** the machine and disconnect the **STM-CABLE** from the board.

**Step 7** last step **switch on the machine** it can take **approx. 5 to 10 minutes** until the machine starts up.

